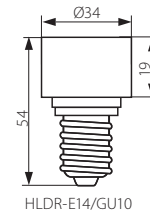


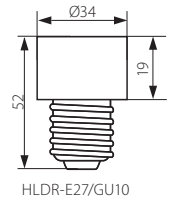


HLDR-E14/GU10

HLDR-E27/GU10



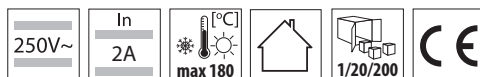
HLDR-E14/GU10



HLDR-E27/GU10

- ▶ obudowa: tworzywo sztuczne/ceramika
- ▶ body: plastic/ceramics

Kanlux				
HLDR-E14/GU10	08851	E14/GU10	biały / white	26
HLDR-E27/GU10	08850	E27/GU10	biały / white	28



maksymalna dopuszczalna temperatura oprawki wynosząca 180°C / maksymalna dopuszczalna moc źródła światła 35W
maximum permissible socket temperature 180°C / maximale permissible power of the light source is 35W

Oprawka ceramiczna / Ceramic socket

HLDR



HLDR-E14

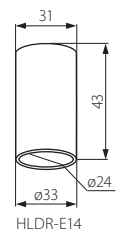


HLDR-E14-F

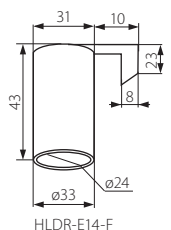
HLDR-E27

HLDR-E27-F

HLDR-E27-D



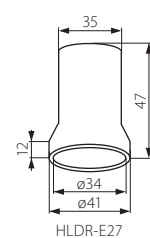
HLDR-E14



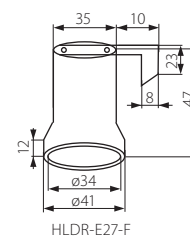
HLDR-E14-F

- ▶ obudowa: ceramika
- ▶ body: ceramics

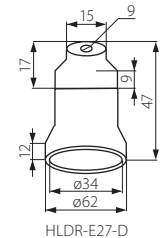
Kanlux					
HLDR-E14	02170	szary / grey	2A	E14	50
HLDR-E14-F	02173	szary / grey	2A	E14	55
HLDR-E27	02160	szary / grey	4A	E27	52
HLDR-E27-F	02161	szary / grey	4A	E27	58
HLDR-E27-D	02162	szary / grey	4A	E27	56



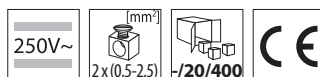
HLDR-E27



HLDR-E27-F



HLDR-E27-D



maksymalna dopuszczalna temperatura oprawki wynosząca 180°C / maximum permissible socket temperature 180°C